

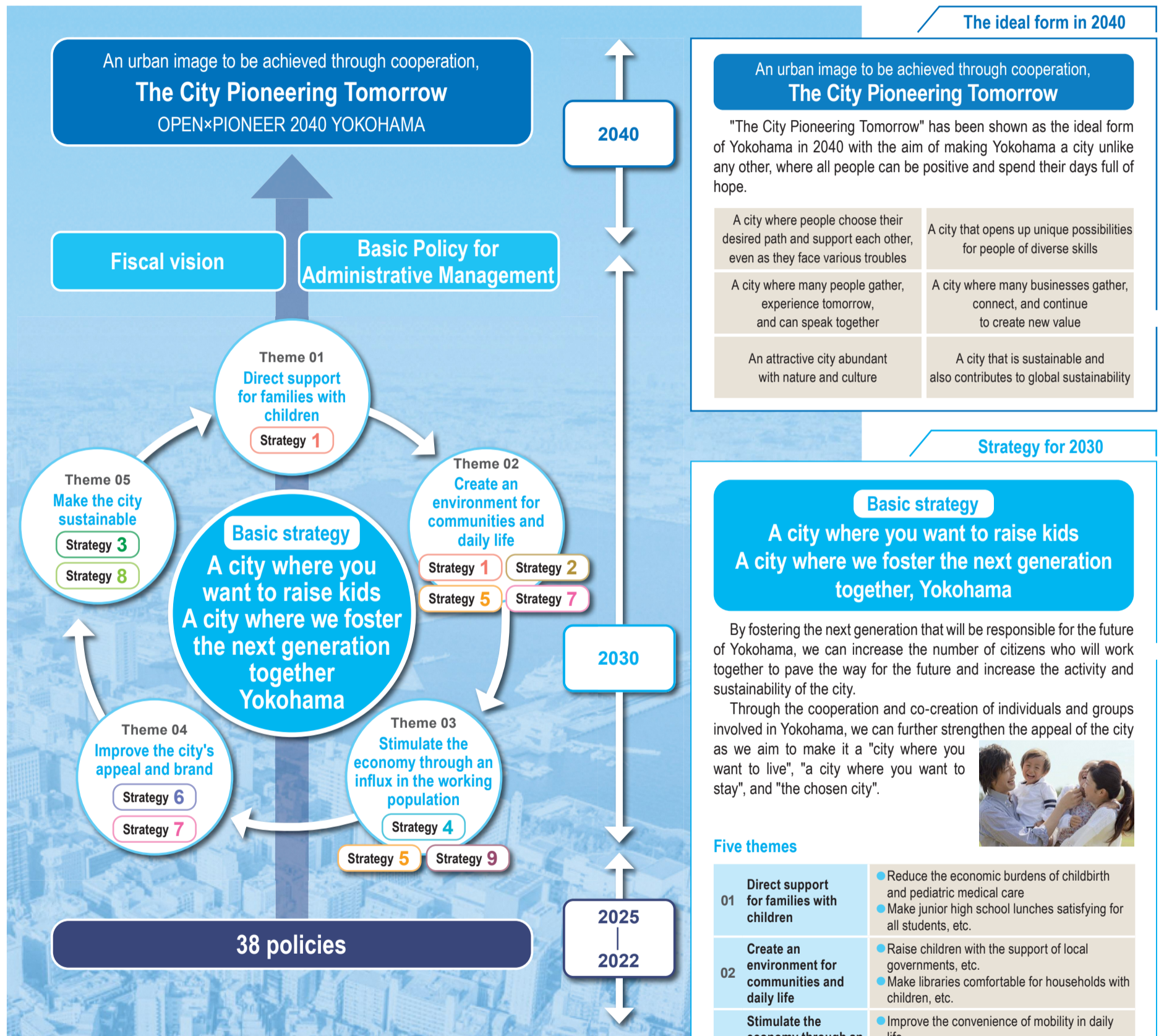
Let's think about Yokohama's future together

Yokohama Medium-term Plan for 2022 to 2025 (First Draft)

Framework of the medium-term plan for 2022 to 2025

This plan shows the ideal form of Yokohama in 2040 and the basic strategy for achieving it. Accordingly, we have considered 9 strategies and 38 policies. We have released the first draft in order to help us create the next draft planned for December 2022, and we would like your opinions.

Now accepting opinions



The ideal form in 2040

The City Pioneering Tomorrow

"The City Pioneering Tomorrow" has been shown as the ideal form of Yokohama in 2040 with the aim of making Yokohama a city unlike any other, where all people can be positive and spend their days full of hope.

A city where people choose their desired path and support each other, even as they face various troubles	A city that opens up unique possibilities for people of diverse skills
A city where many people gather, experience tomorrow, and can speak together	A city where many businesses gather, connect, and continue to create new value
An attractive city abundant with nature and culture	A city that is sustainable and also contributes to global sustainability

Strategy for 2030

Basic strategy

A city where you want to raise kids A city where we foster the next generation together, Yokohama

By fostering the next generation that will be responsible for the future of Yokohama, we can increase the number of citizens who will work together to pave the way for the future and increase the activity and sustainability of the city.

Through the cooperation and co-creation of individuals and groups involved in Yokohama, we can further strengthen the appeal of the city as we aim to make it a "city where you want to live", "a city where you want to stay", and "the chosen city".



Five themes

01 Direct support for families with children	<ul style="list-style-type: none"> Reduce the economic burdens of childbirth and pediatric medical care Make junior high school lunches satisfying for all students, etc.
02 Create an environment for communities and daily life	<ul style="list-style-type: none"> Raise children with the support of local governments, etc. Make libraries comfortable for households with children, etc.
03 Stimulate the economy through an influx in the working population	<ul style="list-style-type: none"> Improve the convenience of mobility in daily life Support for small and medium-sized businesses, etc.
04 Improve the city's appeal and brand	<ul style="list-style-type: none"> Further promote "Garden City Yokohama" Create rest and relaxation areas by using the features of the three zoos, etc.
05 Make the city sustainable	<ul style="list-style-type: none"> Improve regional disaster preparedness in order to protect lives from disaster Promote a zero-carbon city, etc.

Nine strategies

These will be the direction of initiatives for the next 10 years in order to achieve the most important policies and to achieve the intended urban image through cooperation.

Specific initiatives for 2022 to 2025

38 policies

Initiatives that will be the focus of the 4-year period in line with the strategies

Fiscal vision

In order to "promote the necessary policies and maintain fiscal health" as described in the fiscal vision, we must assign priorities to the policies. Therefore, we must prioritize enacting the policies that contribute the most to the basic strategy and optimize administrative services (create or transform operating procedures) based on the "Basic Policy for Administrative Management" to ensure the funding to support Yokohama's citizens in the future.


Basic Policy for Administrative Management

9 strategies and 38 policies

We have set nine medium/long-term strategies for the next 10 years, and we have condensed these into 38 policies that will be the focus of the 4-year planning period.

* For details, refer to the pamphlet for the Yokohama Medium-term Plan for 2022 to 2025 (First Draft). Refer to the next page for ways to get the pamphlet.

Strategy 1 Urban development to create a future for all children Pamphlet pages 23 to 36




We aim to provide greater support for children and child care by establishing an environment in Yokohama where young generations can live, and where hopeful people can be pregnant, have a baby, and raise a child in comfort.

The aim of education is "self-learning, connecting with society, and becoming a person who creates the future with others", and we want to achieve education that leads to improvements in the qualities and abilities of every child.

Related policies

- Policy 1** Strong, ongoing support for child care - Pregnancy, delivery, and infancy - •Reduce the economic burden of pregnancy, delivery, and child care, including eliminating the costs of delivery (basic costs)
- Policy 2** Strong, ongoing support for child care - Infancy and school age - •Remove income limits for medical subsidies and the need for partial payments for children up through junior high grade 3, and establish an environment so that children can be examined by medical institutions with peace of mind
- Policy 3** 5 Support for troubled children and families
- Policy 4** Better protection from child and domestic abuse and better social care systems Ensure that all children are eating school lunches, establish a delivery-based supply system, and supply school lunches that are satisfactory to students
- Policy 5** Promote education that values each child
- Policy 6** Create a rich learning environment Establish a new look for libraries and provide a rich learning environment for citizens


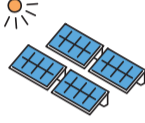
Strategy 3 Achieving "Zero Carbon Yokohama" Pamphlet pages 61 to 66




In order to achieve carbon neutrality by 2050, 50% has been set as the target for greenhouse gas reductions by 2030, and the advancement of initiatives involving cooperation with citizens and businesses will lead to further growth in the city through de-carbonization.

We aim to create a Sound Material-Cycle Society while contributing to the success of the SDGs for 2030.

Related policies

- Policy 18** Promoting a de-carbonized society 
- Policy 19** Promoting sustainable resource circulation 



Strategy 2 Urban development for allowing people to be active throughout their life Pamphlet pages 37 to 60



We will help people be healthy and realize the value in life, and we will achieve a harmonious community where you can live as you like in an area where you are comfortable and want to be.

We will improve care, treatment, health, and welfare so that you can live comfortably, true to yourself regardless of if you require medical treatment or care.

Related policies

- Policy 7** Ensure the health and comfort of citizens 
- Policy 8** Improve sports environments
- Policy 9** Stimulate regional communities •Enhance operational support for local governments
- Policy 10** Promote mutual support in communities
- Policy 11** Promote multicultural harmony 
- Policy 12** Support gender equality
- Policy 13** Support disabled children/adults
- Policy 14** Support daily life and independence •Support the independence of individuals with trouble in daily life
- Policy 15** Promoting comprehensive regional care that supports the daily life and comfort of the elderly
- Policy 16** Promote home medical treatment and care
- Policy 17** Improve the system for providing medical treatment •Improve the medical system so that it is streamlined from pregnancy/childbirth through child care

Strategy 4 Achieve economic growth to pioneer the future and achieve "International City, Yokohama" Pamphlet pages 67 to 80




We will support the succession or development of small and medium-sized businesses, the promotion of open innovation with various parties, and the creation of an environment that appeals to overseas workers and businesses to achieve more economic growth in Yokohama and generate appeal as the "International City, Yokohama".

Related policies

- Policy 20** Strengthen the business foundations of small and medium-sized businesses •Stimulate shopping districts
- Policy 21** Promote the creation of startups and innovation 
- Policy 22** Promote tourism and MICE
- Policy 23** Establish a community in the city for cooperation with universities •Further regional contributions through the intellectual assets and research results of universities in the city
- Policy 24** Support international businesses and solve global issues
- Policy 25** Become an international city in order to bring people together from around the world

Strategy 5 Urban development of suburbs that continue to create new value Pamphlet pages 81 to 88



We aim to develop suburbs that can sustain diverse lifestyles by maintaining a positive living environment, by responding to changes in work and lifestyles, and by maintaining and improving regional transportation.

Related policies

- Policy 26** Developing attractive and charming suburbs •Attract and promote strategic land use
•Create new sites to stimulate the Kamiseya area
•Initiatives for holding the World Horticultural Exhibition
- Policy 27** Developing residences and an environment that are rich and easy to live in With the intent to support the mobility of the elderly, we are considering comprehensive mobility services for the region that are sustainable, such as an elderly pass system (free for people ages 75 and up) based on the usage results obtained following the conversion of elderly passes to IC cards, etc.
- Policy 28** Achieve regional transportation that supports daily life

Strategy 6

Development of urban and oceanside areas that create growth and activity

Pamphlet pages 89 to 94



We will improve environments so that people and businesses from Japan and abroad can gather and be active and to develop an attractive city where people want to visit.

We will achieve a city that is growing and active by systematically renewing and upgrading the functions of existing facilities and generating interest and activity through "Culture, Art and Creative City Measures".

Related policies

Policy 29 Development of active urban and oceanside areas

- Promote re-development of the Yamashita Pier
- Promote activity through improved navigability and cooperation with various parties

Policy 30 Promote a "Culture, Art and Creative City" that is relevant to citizens

Strategy 8

Development of a city that is highly safe and comfortable in relation to disasters

Pamphlet pages 101 to 108



We will take hard and soft measures to protect the lives of citizens, maintain the functions of the city, and so that recovery can be swiftly performed even if natural disasters, such as large-scale earthquakes, or damage due to wind and water occur. This will achieve a resilient city where anyone can live in safety and comfort.

Related policies

Policy 33 Urban development resistant to earthquakes

Policy 34 Urban development resistant to wind and water damage

Policy 35 Urban development for disaster preparedness to support communities



Increase awareness of disaster preparedness (improve awareness for helping oneself)

Strategy 7

Achieve Garden City Yokohama, with the appeal of flowers, greenery, farms, and water

Pamphlet pages 95 to 100



The promotion of "Garden City Yokohama", which uses the flowers, greenery, farms, and water that provide various blessings; the encouragement of understanding and actions regarding the conservation of biological diversity; and the development of active urban agriculture will contribute to the success of the World Horticultural Exhibition planned to be held in 2027, generate attractions and excitement unique to Yokohama, and achieve abundant living through life alongside nature.

Related policies

Policy 31 Establish an urban environment rich in nature

Improve the zoos in order to strengthen urban branding

Policy 32 Developing lively urban agriculture



Strategy 9

Urban development that supports civic life and economic activities

Pamphlet pages 109 to 116



We are promoting the development of transportation networks and an internationally-competitive port to further develop the economy of Yokohama and to bring in people and investments from Japan and abroad. We are systematically and effectively promoting maintenance and upgrades to public facilities in order to improve the functions of the city.

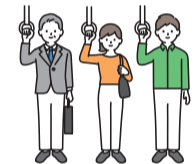
Related policies

Policy 36 Improve the transportation network

Promote the development of rail networks

Policy 37 Comprehensive port development for international competitiveness

Policy 38 Systematically and effectively maintain and upgrade public facilities



We are looking for public comments! Please tell us your opinions.

Sep. 15 (Thurs.) through Oct. 14 (Fri.)

のりしろ (ここにのりをつけてください)

【具体的なページや項目名】

(例: P●の政策○○○○について)

【ご意見欄】

のりしろ (ここにのりをつけてください)

のりしろ (ここにのりをつけてください)

Details on the first draft are available on the website.

<https://www.city.yokohama.lg.jp/city-info/seisaku/hoshin/4kanen/2022-2025/soan.html>



Yokohama Medium-term Plan for 2022 to 2025

Search



It can also be viewed at the Citizen Information Center or any ward office

Administrative management

Responsible and trustable administrative management based on the Basic Policy for Administrative Management

Pamphlet pages 121 to 134

Yokohama faces the diverse and complex issues of a large city. In order to make the municipal policies sustainable, Yokohama City Hall and each member of staff focus on "the citizen's point of view", "speediness", and "comprehensive optimization", and we will promote administrative management to support the realization of our policies with a fiscal foundation.



Initiatives for the next 4 years

1	Optimize the organization and maximize the abilities of staff and the execution of roles ① Establish an organizational structure and promote a salary system that are suitable for the current generation ② Train human resources for stronger teamwork and establish a work environment that is easy to work in
2	Optimize administrative services ~ create or transform operating procedures ~ ① Promote DX to create new value and services ② Promote sustainable administrative management to meet the needs of citizens
3	Improve civic governance and further stimulate activity in communities through collaboration and co-creation

Source Basic Policy for Administrative Management

We are creating the Basic Policy for Administrative Management as a general policy for "organizations and personnel" and "administrative frameworks" in order to "create and transform" Yokohama City Hall. The "Yokohama Medium-term Plan (Administrative Management)" indicates the main targets, indicators, and activities of the next 4 years in detail based on the direction of the "basic policy".

Planning schedule

Publication of first draft (August 2022)

Publication and planning of rough draft (Planned for December)

The "Basic Policy for Administrative Management" (first draft) can be viewed on the website and at the Citizen Information Center or any ward office.



Yokohama City Basic Policy for Administrative Management [Search](#)

Fiscal management

Advance policies while maintaining fiscal health in accordance with the fiscal vision

Pamphlet pages 135 to 146

We will set fiscal targets, create fiscal initiatives, and promote sustainable fiscal management at the foundation of civic policy for appropriately responding to diverse, complex problems in order to advance policies while maintaining fiscal health in accordance with the "Fiscal Vision for Sustainable Development in Yokohama" (established June 2022).

Initiatives for the next 4 years

1	Debt management from a medium/long-term perspective based on thorough debt management governance
2	Improve the stability and structure of funding based on strategic and comprehensive initiatives
3	Promote comprehensive asset management (facility management)
4	Efficient and effective budget restructuring and execution based on stronger expenditure governance
5	Share information and raise issues to gain the support of citizens



Source "Fiscal Vision for Sustainable Development in Yokohama" (fiscal vision)

The fiscal vision was established through discussions in municipal meetings as a medium/long-term fiscal policy for specifying and enacting the "Ordinance on Promoting Responsible Fiscal Management for Yokohama's Future".

The "fiscal vision" is posted on the website, and it can be viewed at the Citizen Information Center or any ward office.

Yokohama Fiscal vision [Search](#)



We are waiting for your opinions

We are looking for public comments!

Sep. 15 (Thurs.) through Oct. 14 (Fri.)

Electronic application system (recommended)



Email

ss-chuki2022@city.yokohama.jp

Post

Must be postmarked Oct 14 or earlier

FAX

045-663-4613

Bring it directly

There is no specific format, but ensure that you include (1) your address, (2) your name, and (3) your opinion on the above.

What are public comments?

When municipal plans, etc., reach a more concrete stage, they are widely published. We request opinions and proposals from citizens, which we will consider when making decisions.

✂️ 切り取り

料金受取人払郵便

2 3 1-0 0 0 5

横浜港局

みほん

8381

差出有効期間
2022年
10月14日まで
(郵便切手不要)

横浜市中区本町6-50-10
横浜市政策局政策課

「パブリックコメント担当」行

のりしろ

<注意>

- ご意見を正確に把握する必要があるため、電話や口頭でのご意見はお受け付けすることができません。
- 頂いたご意見は、原案策定の参考にさせていただきます。個人情報情報を除き、本市の考え方と合わせて後日公表させていただきます。個別の回答は行っておりませんので、あらかじめご了承ください。
- ご意見の提出に伴い頂いた氏名・住所・メールアドレス等の個人情報は、「横浜市個人情報の保護に関する条例」の規定に従って適正に管理し、本案に対する意見募集に関する業務にのみ利用させていただきます。

〒	-
ご住所	
お名前	

のりしろ